

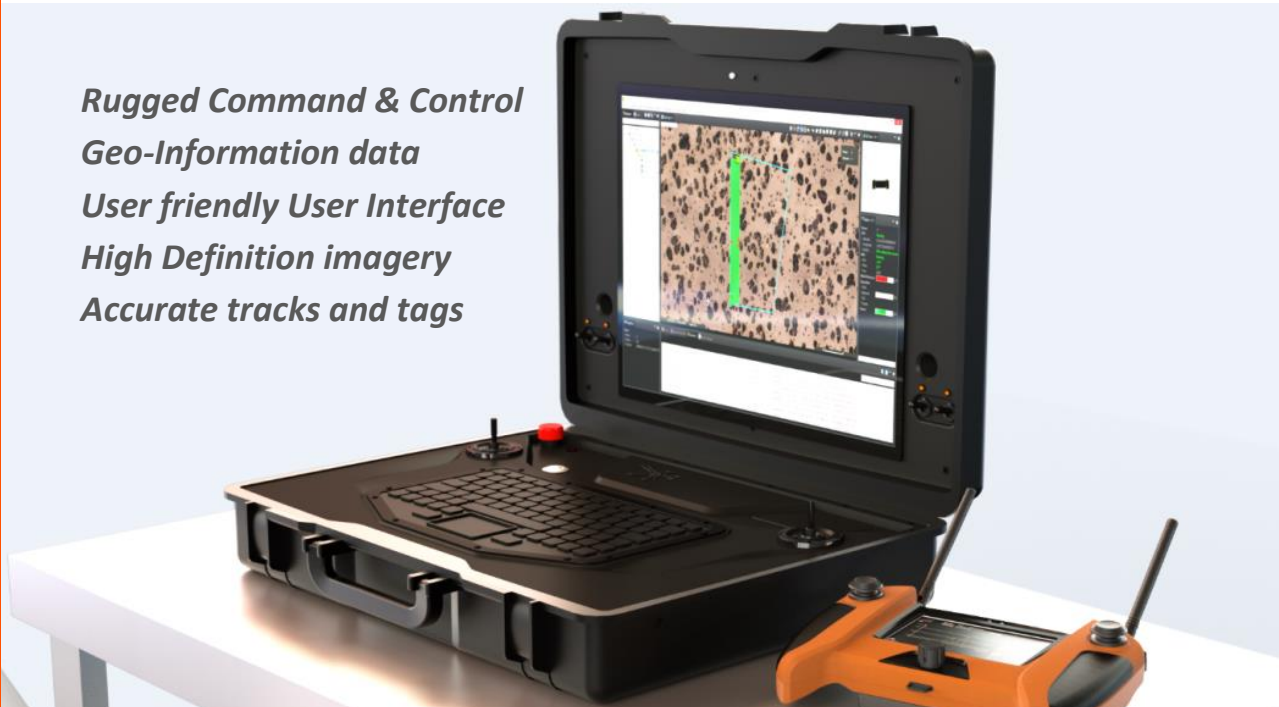


Ant-Droid Ground Station™

SMART DEMINING

Ant-Droid Ground Station™ is an advanced Command & Control unit enabled with Geo-Informational and HD imagery. Combined with other Ant-Droid products enable operations to achieve an enhanced level of efficiency, accuracy and safety. Additionally the Ground Station provides customizable reports and can be integrated with third party systems.

- Rugged Command & Control*
- Geo-Information data*
- User friendly User Interface*
- High Definition imagery*
- Accurate tracks and tags*



Transportable – compact and robust, the Ground Station can be easily transported and deployed.



User friendly – Intuitive UI clearly shows all elements in maps and HD imagery enabling the best operation control.



Remote control – Using telemetry and video: the status of each element in the operation is perfectly monitored real-time.

The most advanced technology in geo-information available

Set-Up Mission

Ant-Droid Ground Station is easy to deploy and configure. Setting up a mission using the UI maps and imagery is quick and intuitive.

All actors in the field (Mine Explorers, Personal trackers...) are automatically recognized and included in the repository.

Monitoring

- Check out the status of the operative at first sight at all times. Threats are automatically represented clearly with maximum accuracy.
- Alerts are signaled clearly.
- Select any element in the field to access full range of information: sensors, position, status, battery...

Reporting

- Get simple or detailed configurable reports tailored to your needs.
- Reporting includes area explored, targets found, target analysis, cost, timings, incidences and much more.
- Ask for integration capabilities with other platforms.

Work Area

Set-Up a work area it's easy with Ant-Droid Ground Station. The Geo-Informational and imagery tools provide powerful ways to accurately define every detail. Include.

The progress of the mission will be perfectly tracked continuously.

Sensor telemetry

Connect to any Mine Explorer in the field and monitor their sensors signals, including Metal Detection, GPR...

Stay out of the landmine to analyze the potential hazards using easy to understand information.

Imagery

The power of the real image combined with high precision geo-referenced maps, brings to the Ground Station a valuable dimension of environment information.

Add images from our drones or from other sources and geo-reference them to enrich maps.

Main Features



Rugged – Designed to resist wide range of climatic conditions.



Sun readable screen – High quality screen ready for outdoor: high contrast and brightness

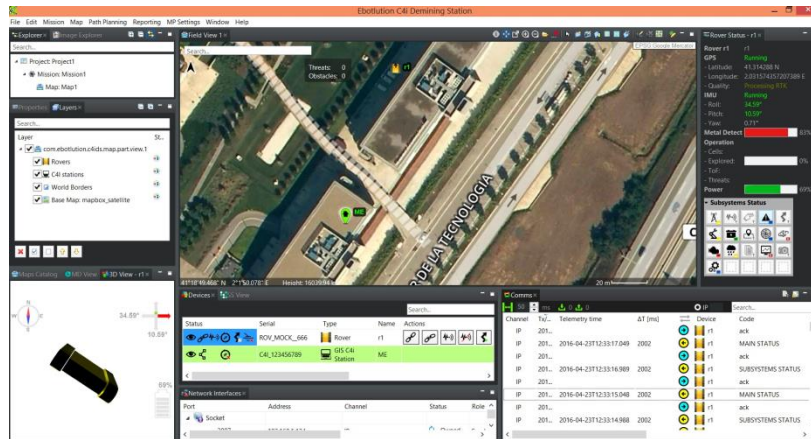


Controllers – From the station the robotic actors in the field can be controlled using the high precision joysticks.

Energy – 8h of autonomy, rechargeable at any regular power



Safety – the security stop button immediately sends signal to all Ant-Droid equipment.



Video – Real-Time switchable video streaming with all video enabled elements in the field.



Telemetry – Full control of Mine Explorer status including battery and inertial status.



Back light – Comfortable and rugged Industrial keyboard with backlight.

Communications – Telemetry and video is sent and received through different bands to achieve maximum reliability.

Connectivity – The station is equip with USB/Ethernet/Wifi connections.



Field inspection, quality assurance procedures with "Personal safety pack"

Safety

Ant-Droid Demining Solution™ minimizes the human risk during explorative and verification phases.

When operators enter the field they are always controlled and they carry the best information of the status of the field with them.

Service

GeoEntec Environment Technologies provides not only the solution but also training and consulting services. Keep in touch with our commercial network to learn what ebotluton can do for you and your specific requirements. Check out at

www.geoentec.com

Accessories

Backpacks, harnesses, battery packs, tracks, chargers ... All the accessories and spare parts are available also from our webpage. Request assistance and our sales team will contact you to provide with all the information you may need.

GeoEntec Environment Technologies offers product support, customer training and equipment consultancy. Additionally, a full range of spare parts and accessories for all our set of solutions is available.

Contact our sales team in Gernika or any of our agents around the world to get more information on deployment options, quotations or questions.

GeoEntec®
Environment Technologies
Gernika

www.geoentec.com
info@geoentec.com